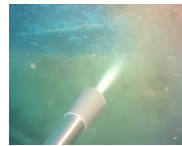


## Diesel High Pressure Unit

21 LPM @ 170 bar

The diesel engine driven HDMD170\_21 high pressure unit is designed for fast cavitation cleaning of light fouling. The solid, stand-alone, cart has 4 wheels for easy transportation and 21 LPM @ 170 bar pump, Yanmar diesel engine, diesel tank and electric start. The HDMD170\_21 is compatible with the CW300 long gun for removing light fouling from underwater surfaces fast and efficient.



## Specifications

**Compatible with:** CW300

**Max. Pressure:** 170 bar (2,465 psi)

**Max. flow:** 21 LPM (5.5 GPM)

**Power:** 11HP Yanmar diesel engine

**Weight:** 124kg (273 lbs)

**Dimensions:** 89x77x86cm  
(35x30.3x33.9")

## Features

- Removes light fouling from hulls, propellers and underwater surfaces
- Heavy duty, 4 wheeled cart
- Manual pressure valve
- Readily serviceable water filter
- Automatic decelerator to reduce RPM in the bypass phase
- No engine-oil safety device
- Motor thermal protection